

SPECIFICATION – TOWER TRAY

GENERAL

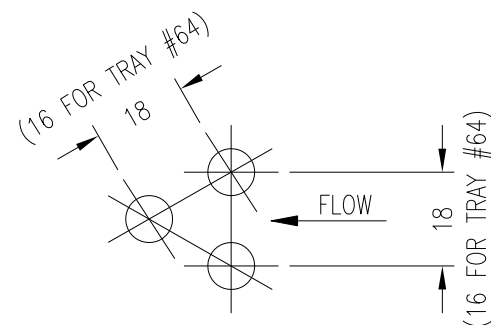
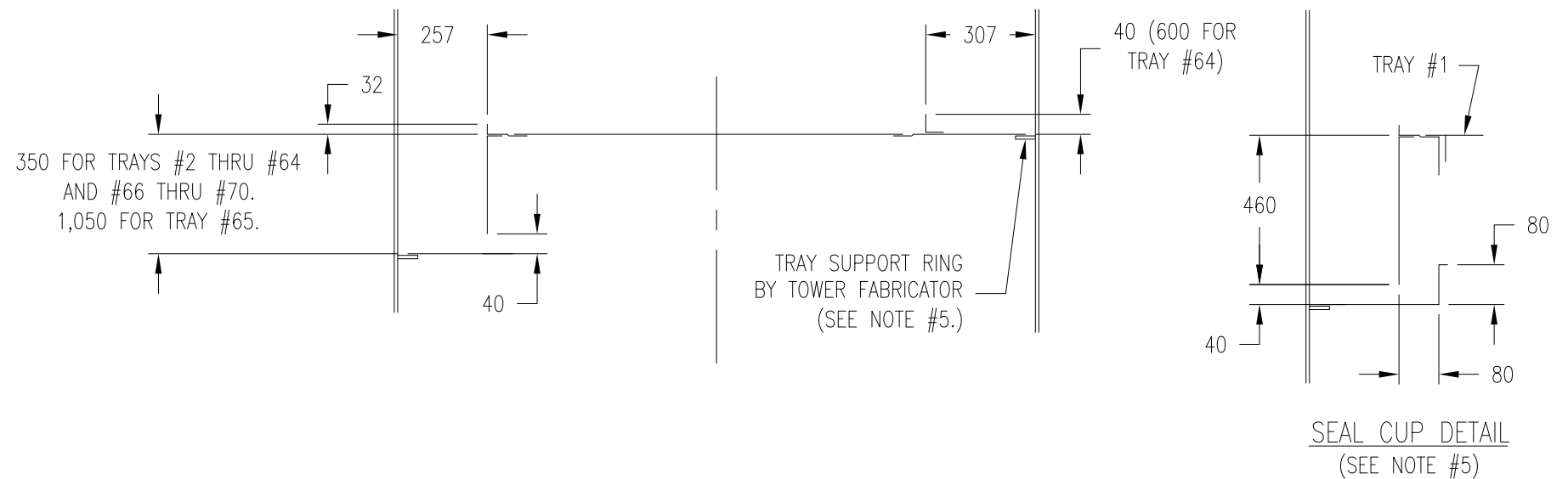
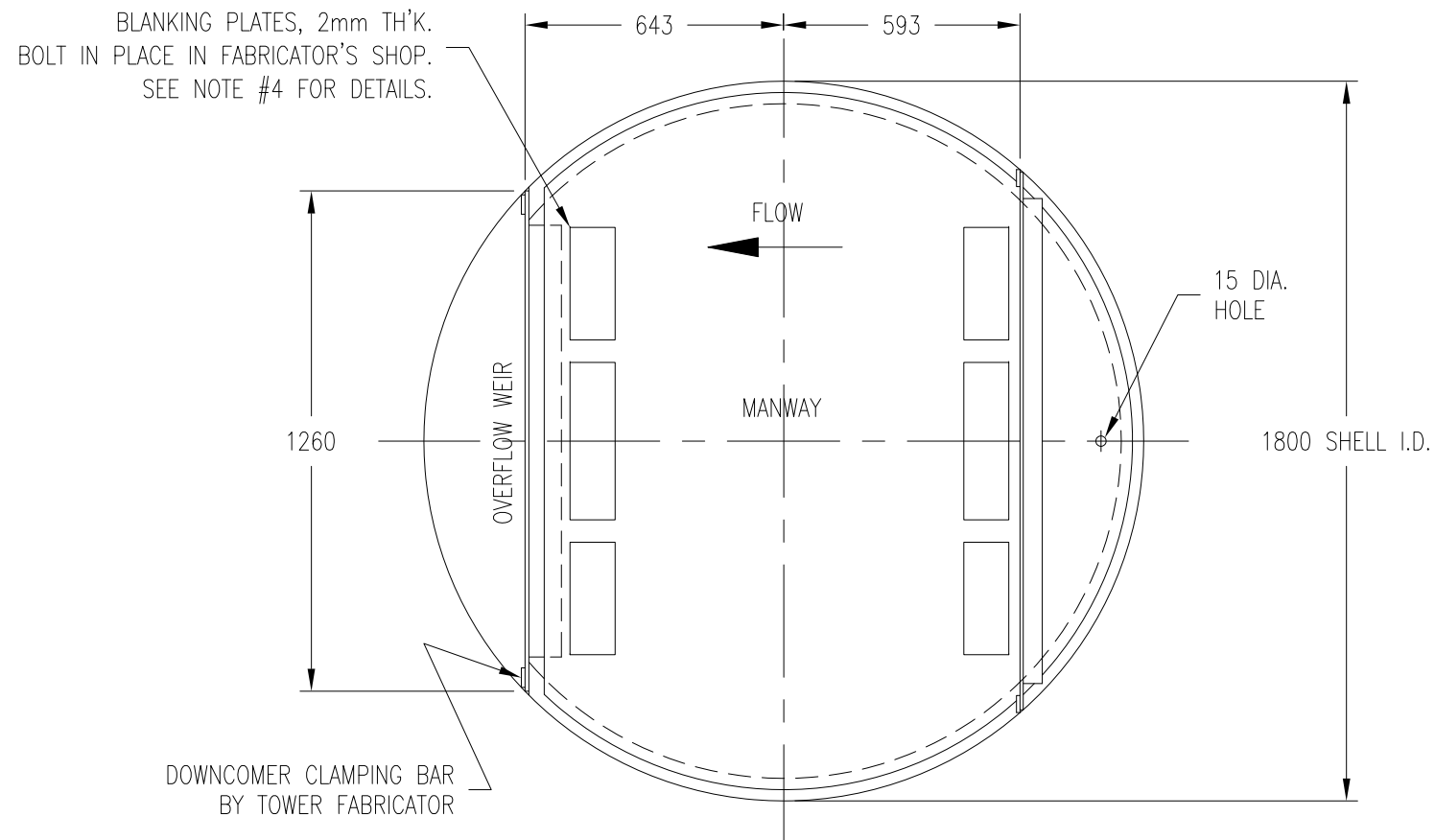
ITEM NO.: T-533 SERVICE: TRAYS #1 THRU #70
 TYPE: PERFORATED NO. REQ'D.: 70
 FLOW: SIDE TO SIDE

MECHANICAL DATA

DIAMETER: 1800 I.D. SHELL SPACING: #64 AND #65 = 1,050 350 (EXCEPT BETWEEN TRAYS)
 MATERIAL & THICKNESS: TP-304 STAINLESS STEEL
 TRAY SUPPORTS: BY FABRICATOR COLLAR HEIGHT: _____
 PERFORATIONS:
 NUMBER: 5,650 (SEE NOTES #4 & #8)
 SIZE: 6
 SPACING: 18 MINIMUM TRIANGULAR (EXCEPT TRAY #64 = 16 MINIMUM)
 % HOLE AREA: _____
 DOWNCOMERS:
 TYPE: SEGMENTAL
 MATERIAL & THICKNESS: TP-304 STAINLESS STEEL
 AREA: — CLEARANCE: 40
 ASSEMBLY: BOLTED
 WEIRS:
 MATERIAL & THICKNESS: TP-304 STAINLESS STEEL
 LENGTH: 1,260 – OVERFLOW
 HEIGHT – DISTRIBUTING: 40 (EXCEPT TRAY #64 = 600) OVERFLOW: 32
 ASSEMBLY: BOLTED OR SPOT WELDED

NOTES:

1. EACH TRAY TO BE PROVIDED WITH MANWAYS THAT ARE REMOVABLE FROM TOP AND BOTTOM.
2. TRAYS ARE NUMBERED FROM BOTTOM TO TOP.
3. ALL TRAY PARTS TO FIT THRU I.D. OF A 600mm NOZZLE.
4. TRAYS #1 THRU #8 TO BE BLANKED AS SHOWN TO APPROXIMATELY 4,400 HOLES. TRAYS #65 THRU #70 TO BE BLANKED AS SHOWN TO APPROXIMATELY 4,100 HOLES.
5. FABRICATOR TO FURNISH DETAIL DIMENSIONS FOR DOWNCOMER BARS, TRAY SUPPORT RING, AND SEAL CUP.
6. FABRICATOR TO PROVIDE MINIMUM 100 NON-PERFORATED CALMING ZONE ADJACENT TO INLET WEIR AND OVERFLOW WEIR.
7. ALL DIMENSIONS IN mm EXCEPT WHERE NOTED.
8. TRAY #64 TO HAVE 6500 HOLES.



1. NOTICE: The process design and other information contained on this drawing is the confidential property of KATZEN INTERNATIONAL, INC. and is protected by confidentiality agreement, copyright law, and trade secret law, and may not be used, reproduced, discussed with, or disclosed to, any unauthorized persons or organizations in any manner or for any purpose, without prior written approval by an authorized representative of KATZEN INTERNATIONAL, INC.
 2. KATZEN INTERNATIONAL, INC. is authorized to practice engineering in the state of Ohio, USA. All code requirements shall be reviewed by a person or persons licensed to practice engineering in the applicable jurisdiction, unless stipulated otherwise.

							BIOETANOL PAYSANDÚ
						UTE ABENER TEYMA PAYSANDÚ	KATZEN INTERNATIONAL, INC. TECHNOLOGY • ENGINEERING CINCINNATI, OHIO, U.S.A.
						Scale NONE	211,200 LITERS/DAY MOTOR FUEL GRADE ETHANOL PLANT EQUIPMENT SPECIFICATION
0	12/19/12	REV. 0 ISSUE	RLM	JDC	JDC	Origin: CDT	Nº Plano: 0003-PLN-KAT-05-62-0216 Sheets: 1 Sheet Nº: 1 Client Nº: 1132-01 Dwg Nº: 05-216
Rev.	Date	Description	Dwn By	Ckd By	Appd By	ITEM: T-533 N1	STRIPPER/RECTIFIER TRAYS #1 THRU #70